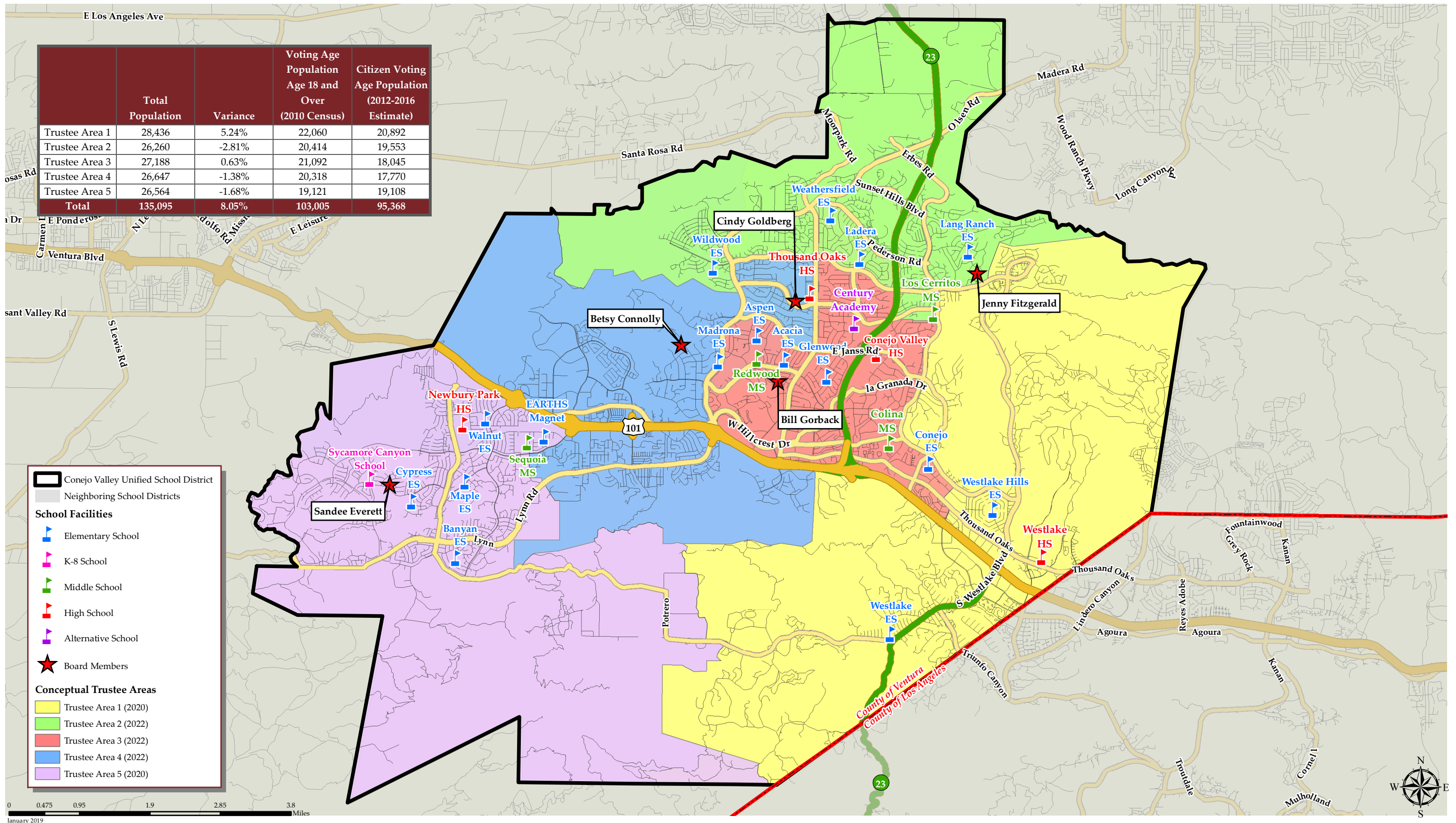


# CONEJO VALLEY UNIFIED SCHOOL DISTRICT

# CONCEPTUAL TRUSTEE AREAS - SCENARIO 2A

	Total Population	Variance	Voting Age Population Age 18 and Over (2010 Census)	Citizen Voting Age Population (2012-2016 Estimate)
Trustee Area 1	28,436	5.24%	22,060	20,892
Trustee Area 2	26,260	-2.81%	20,414	19,553
Trustee Area 3	27,188	0.63%	21,092	18,045
Trustee Area 4	26,647	-1.38%	20,318	17,770
Trustee Area 5	26,564	-1.68%	19,121	19,108
<b>Total</b>	<b>135,095</b>	<b>8.05%</b>	<b>103,005</b>	<b>95,368</b>



**Legend**

- Conejo Valley Unified School District
- Neighboring School Districts

**School Facilities**

- Elementary School
- K-8 School
- Middle School
- High School
- Alternative School
- Board Members

**Conceptual Trustee Areas**

- Trustee Area 1 (2020)
- Trustee Area 2 (2022)
- Trustee Area 3 (2022)
- Trustee Area 4 (2022)
- Trustee Area 5 (2020)

0 0.475 0.95 1.9 2.85 3.8 Miles  
January 2019



## CONEJO VALLEY UNIFIED SCHOOL DISTRICT

### CONCEPTUAL TRUSTEE AREAS - SCENARIO 2A

Total Population (2010 Census)						
	Trustee Area 1	Trustee Area 2	Trustee Area 3	Trustee Area 4	Trustee Area 5	Variance
Population	28,436	26,260	27,188	26,647	26,564	
Population Variance	1,417	-759	169	-372	-455	
	5.24%	-2.81%	0.63%	-1.38%	-1.68%	8.05%
Hispanic/Latino	2,419	3,412	8,367	5,196	3,213	
	8.51%	12.99%	30.77%	19.50%	12.10%	
White	22,257	19,699	16,130	17,618	19,661	
	78.27%	75.02%	59.33%	66.12%	74.01%	
Black/ African American	320	329	329	316	272	
	1.13%	1.25%	1.21%	1.19%	1.02%	
American Indian/ Alaska Native	34	35	73	52	51	
	0.12%	0.13%	0.27%	0.20%	0.19%	
Asian	2,588	1,997	1,595	2,726	2,448	
	9.10%	7.60%	5.87%	10.23%	9.22%	
Native Hawaiian/ Other Pacific Islander	18	35	42	25	17	
	0.06%	0.13%	0.15%	0.09%	0.06%	
Other	37	72	59	47	66	
	0.13%	0.27%	0.22%	0.18%	0.25%	
Two or More Races	763	681	593	667	836	
	2.68%	2.59%	2.18%	2.50%	3.15%	

Population 18 and Over (2010 Census)						
	Trustee Area 1	Trustee Area 2	Trustee Area 3	Trustee Area 4	Trustee Area 5	
Population	22,060	20,414	21,092	20,318	19,121	
Population Variance	1,459	-187	491	-283	-1,480	
	7.08%	-0.91%	2.38%	-1.37%	-7.18%	
Hispanic/Latino	1,686	2,348	5,680	3,503	2,115	
	7.64%	11.50%	26.93%	17.24%	11.06%	
White	17,726	15,751	13,384	14,021	14,578	
	80.35%	77.16%	63.46%	69.01%	76.24%	
Black/ African American	247	261	239	239	214	
	1.12%	1.28%	1.13%	1.18%	1.12%	
American Indian/ Alaska Native	25	28	59	40	37	
	0.11%	0.14%	0.28%	0.20%	0.19%	
Asian	1,974	1,587	1,318	2,125	1,769	
	8.95%	7.77%	6.25%	10.46%	9.25%	
Native Hawaiian/ Other Pacific Islander	14	31	39	17	15	
	0.06%	0.15%	0.18%	0.08%	0.08%	
Other	23	36	40	29	35	
	0.10%	0.18%	0.19%	0.14%	0.18%	
Two or More Races	365	372	333	344	358	
	1.65%	1.82%	1.58%	1.69%	1.87%	

Citizens by Voting Age Population Estimate (2012-2016)						
	Trustee Area 1	Trustee Area 2	Trustee Area 3	Trustee Area 4	Trustee Area 5	
Population	20,892	19,553	18,045	17,770	19,108	
Population Variance	1,818	479	-1,029	-1,304	34	
	9.53%	2.51%	-5.39%	-6.83%	0.18%	
Hispanic/Latino	1,518	2,209	3,379	2,219	1,957	
	7.27%	11.30%	18.73%	12.49%	10.24%	
White	17,299	15,222	13,190	13,528	15,044	
	82.80%	77.85%	73.10%	76.13%	78.73%	
Black/ African American	252	134	169	253	110	
	1.21%	0.69%	0.94%	1.42%	0.58%	
American Indian/ Alaska Native	34	14	60	0	26	
	0.16%	0.07%	0.33%	0.00%	0.14%	
Asian	1,445	1,427	896	1,475	1,704	
	6.92%	7.30%	4.97%	8.30%	8.92%	
Native Hawaiian/ Other Pacific Islander	0	49	0	30	20	
	0.00%	0.25%	0.00%	0.17%	0.10%	
Other	0	0	0	0	0	
	0.00%	0.00%	0.00%	0.00%	0.00%	
Two or More Races	344	498	351	265	247	
	1.65%	2.55%	1.95%	1.49%	1.29%	

ACS Profile Income by Household (2017 Estimates) <sup>[1]</sup>						
	Trustee Area 1	Trustee Area 2	Trustee Area 3	Trustee Area 4	Trustee Area 5	
Income \$0-25k	6.52%	7.75%	20.17%	6.89%	8.79%	
Income \$25-50k	10.29%	8.40%	17.82%	13.34%	13.95%	
Income \$50-75k	11.38%	11.56%	16.28%	11.46%	9.96%	
Income \$75-200k	43.65%	51.53%	36.09%	47.74%	44.64%	
Income \$200k+	28.16%	20.76%	9.65%	20.58%	22.65%	
Total	100.00%	100.00%	100.00%	100.00%	100.00%	

[1] Based off estimates prepared by the Census Bureau