

**RESOLUTION OF THE BOARD OF EDUCATION
OF THE CONEJO VALLEY UNIFIED SCHOOL DISTRICT**

RESOLUTION #21/22-23

**RESOLUTION CONFIRMING EXISTING TRUSTEE AREA BOUNDARY
MAPS FOR BY-TRUSTEE AREA ELECTIONS OF MEMBERS OF THE BOARD
OF EDUCATION**

WHEREAS, the Conejo Valley Unified School District ("District") is governed by a five-member Board of Education ("Board");

WHEREAS, starting with the November 2020 election, pursuant to Resolution No. 18/19-11 adopted by the Board on November 20, 2018 (the "Resolution Establishing By-Trustee Area Elections and Boundary Maps") the District moved from an "at-large" trustee election system to a "by-trustee area" election system, whereby voters now elect District trustees based on the specific area in which the voter lives;

WHEREAS, when the District made this switch it adopted a boundary map for its trustee areas that was based on the census data available at that time, a copy of this map is attached as **Exhibit A**;

WHEREAS, the United States Census Bureau recently released data from the 2020 census which, for school districts using by-trustee area elections, triggers the need to examine, and potentially re-draw, the trustee areas based on population changes;

WHEREAS, specifically, in accordance with Education Code Section 5019.5, the District must adjust its trustee area boundaries, if necessary, based on population changes following each decennial census, such that the population of each area is, as nearly as may be, the same proportion of the total population of the district as each of the other areas;

WHEREAS, courts have concluded that area boundaries are considered to contain equal population if there is less than a 10% variance of total population between the most populated trustee area and the least populated trustee area (see *Navajo Nation v. San Juan County* (10th Cir. 2019) 929 F.3d 1270, 1282);

WHEREAS, the District engaged its demographer, Cooperative Strategies, to examine the trustee areas based on population changes within the District as indicated in the 2020 census;

WHEREAS, on November 1, 2021, the District received a compliance letter from Cooperative Strategies, attached hereto as **Exhibit B**, confirming that it had conducted an analysis of the District's trustee areas to determine population balance and determined there was only a 3.30% overall variance based on total population distribution;

WHEREAS, it appears to the Board, upon consultation with legal counsel, that the 2020 census data does not indicate the need for the District to consider redistricting or revision of the trustee area maps based on the new census data pursuant to Education Code, section 5019.5; and

WHEREAS, the Board has considered the information presented and believes no further action on this matter need be taken at this time, and intends that this a resolution be adopted to confirm the same.

NOW, THEREFORE, BE IT RESOLVED by the Board of Education of the Conejo Valley Unified School District as follows:

Section 1. The foregoing recitals are true and correct.

Section 2. That the Board confirms: (i) it has conducted a review of its trustee areas pursuant to Education Code section 5019.5; (ii) the population of each area is, as nearly as may be, the same proportion of the total population of the district as each of the other areas; (iii) the trustee area boundary map currently on file shall remain in effect; and (iv) no further action on this matter need be taken at this time.

Section 3. That the District Superintendent, the Deputy Superintendent, and/or a designee of either of them are each hereby directed to take all necessary steps to submit this resolution to the Ventura County Committee on School District Organization.

Section 4. The District Superintendent and Deputy Superintendent shall take any additional action and/or execute any documents which they deem necessary to carry out, give effect to, and comply with the terms and intent of this Resolution.

APPROVED, PASSED AND ADOPTED by the Board of Education of the Conejo Valley Unified School District this 16th day of November 2021, by the following vote:

AYES: 5
NOES: 0
ABSTAIN: 0
ABSENT: 0

CONEJO VALLEY UNIFIED SCHOOL DISTRICT

By: Bill Gorbach
Bill Gorbach, Vice President

ATTEST:

By: Karen Sylvester
Karen Sylvester, Board Clerk

EXHIBIT A TRUSTEE AREA MAP

CONEJO VALLEY UNIFIED SCHOOL DISTRICT

APPROVED TRUSTEE AREAS

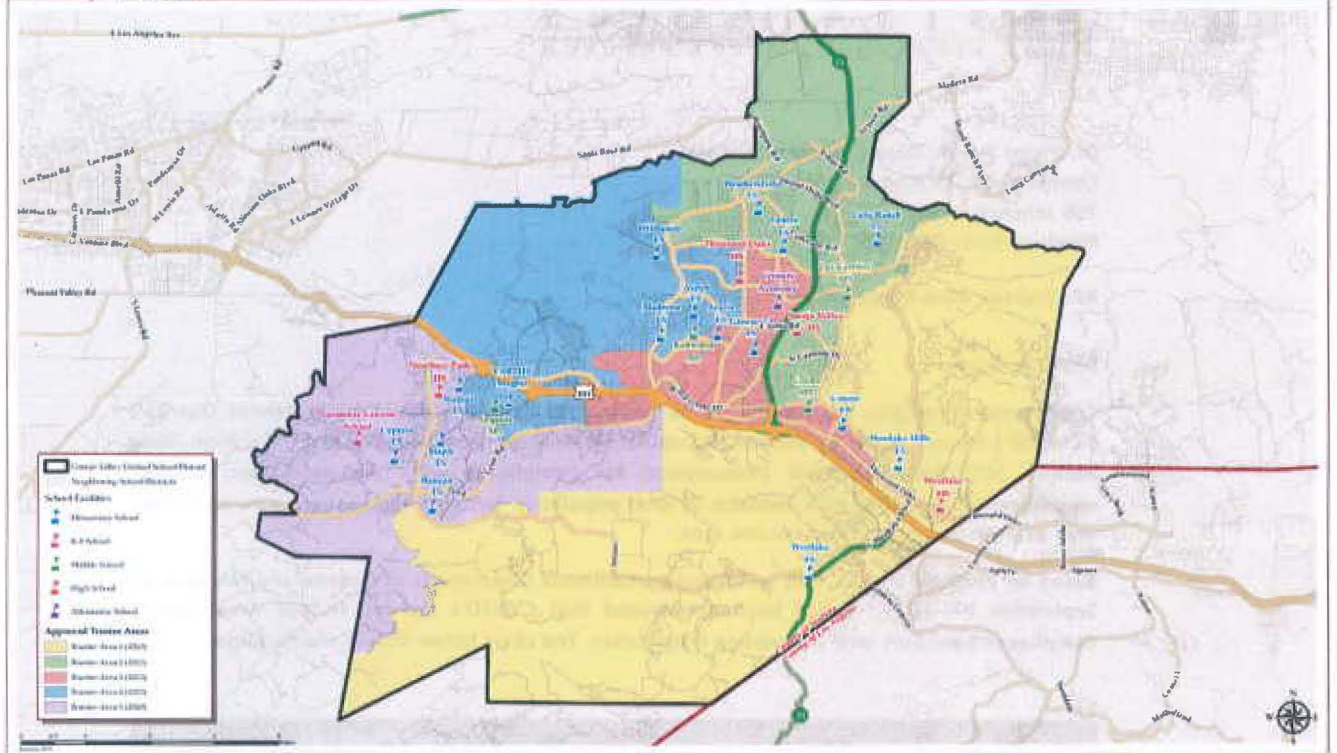


EXHIBIT B
COMPLIANCE LETTER



www.coopstrategies.com

November 1, 2021

Dr. Victor Hayek, Deputy Superintendent
Conejo Valley Unified School District
750 Mitchell Road
Newbury Park, CA 91320

RE: Trustee Area Compliance

Dear Dr. Hayek,

Cooperative Strategies has conducted an analysis of Conejo Valley Unified School District's ("CVUSD") Trustee Areas to determine population balance in accordance with Education Code Section 5019.5(a). The legal presumption for compliance with the population balance requirement is less than 10% variance of total population between the most populated trustee area and the least populated trustee area.

Based on 2020 US Census data (validated by California Department of Finance and finalized on September 27, 2021), it has been determined that CVUSD's current Trustee Areas are in compliance based on total population distribution. The chart below details the findings.

Trustee Area	2020 Census	
	Total	Variance
Trustee Area 1	27,512	1.30%
Trustee Area 2	27,644	1.80%
Trustee Area 3	27,034	-0.50%
Trustee Area 4	26,738	-1.60%
Trustee Area 5	26,900	-1.00%
Total Population	135,828	3.30%

We suggest sharing the results of the analysis with CVUSD's attorney engaged for this matter to evaluate the results and determine next steps. If you would like to schedule a time to discuss the findings of this review, please contact me at 949-250-8318 or dlopez@coopstrategies.com.

Sincerely,

David Lopez
Executive Director